

## Worksheet 7: Ogive

Name: \_\_\_\_\_

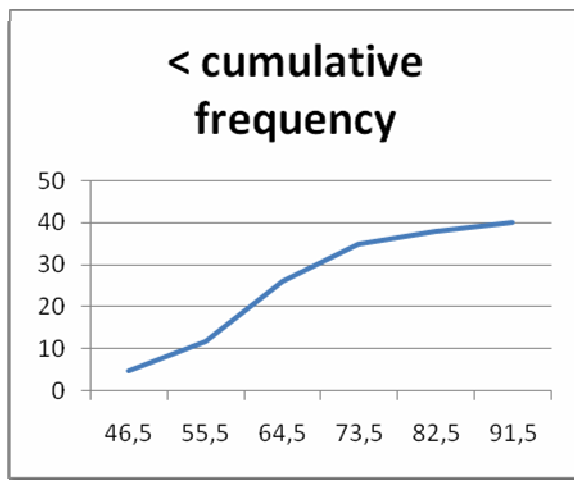
Date: \_\_\_\_\_

- Diagram representation of cumulative frequency table
- Horizontal line: class limit, vertical line: cumulative frequency
- Point = (class limit, cumulative frequency) for each class
- Connect each point with a straight line
- Less than cumulative frequency table → positive ogive
- Greater than cumulative frequency table → negative ogive

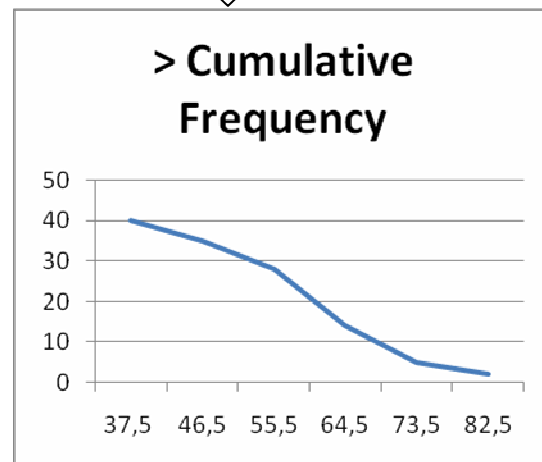
### Example:

Using students' weight data:

Class' Limit	Less Than Cumulative Frequency
$\leq 46,5$	5
$\leq 55,5$	12
$\leq 64,5$	26
$\leq 73,5$	35
$\leq 82,5$	38
$\leq 91,5$	40



Class' Limit	Greater Than Cumulative Frequency
$\geq 37,5$	40
$\geq 46,5$	35
$\geq 55,5$	28
$\geq 64,5$	14
$\geq 73,5$	5
$\geq 82,5$	2



### Exercise:

Draw ogive (both positive and negative) for students' height and labor's daily income data!